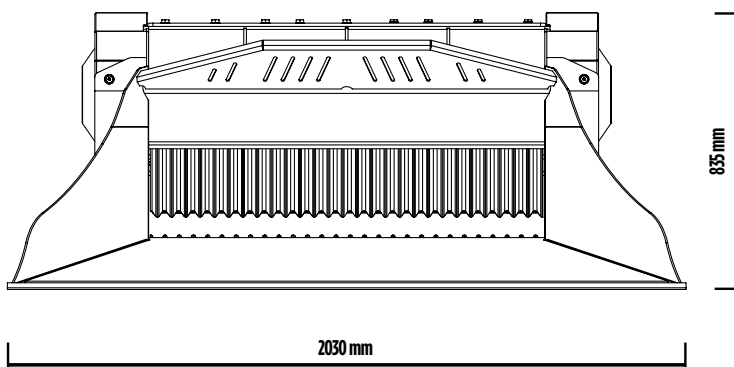
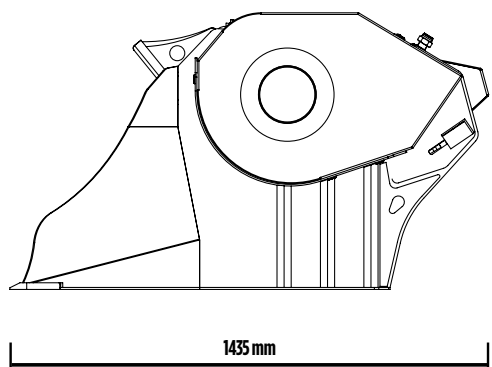
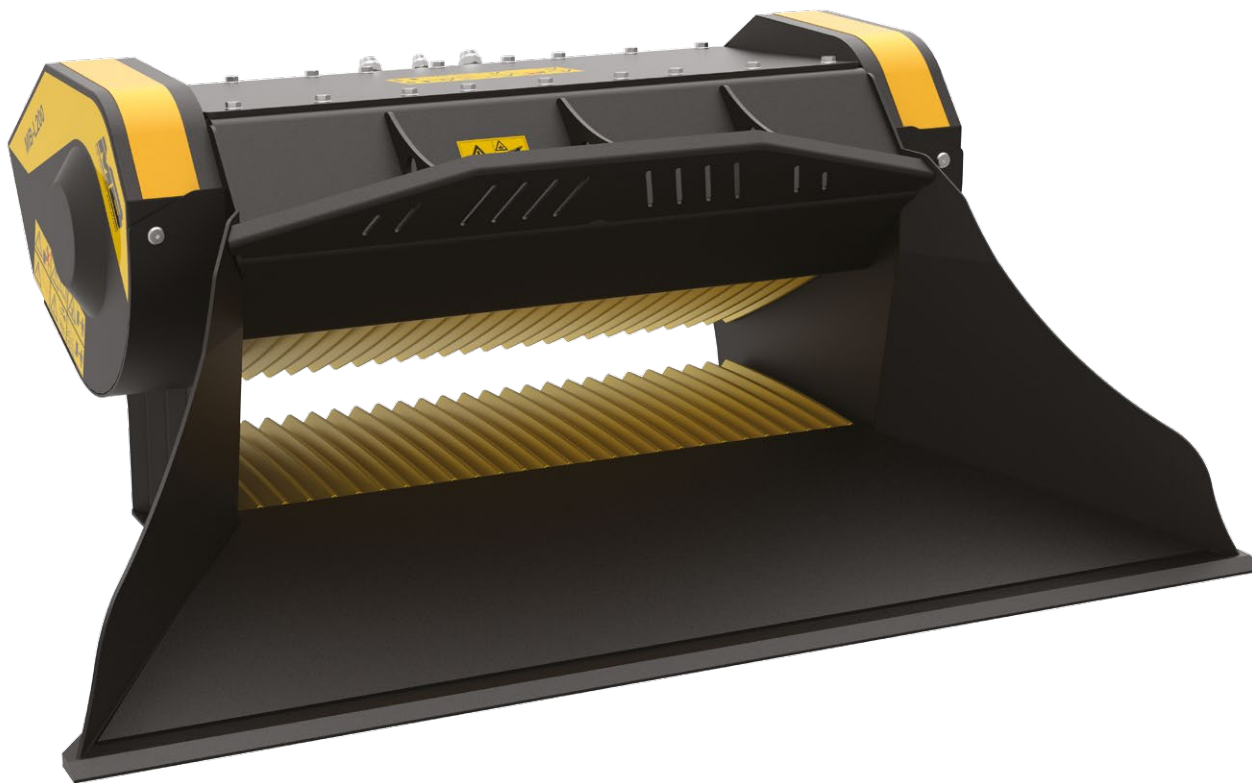
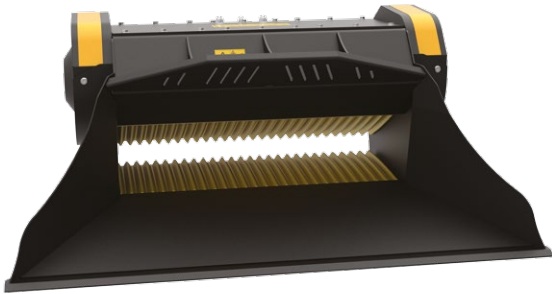


# MB-L200 S2





## MB-L200 S2

The MB-L200 is the largest of MB's crusher buckets, specially designed for excavators, mini-excavators and loaders. Thanks to its dimensions, it allows the highest levels of productivity of the MB-L range, while maintaining the typical MB product characteristics of efficiency and resistance unaltered.



## ACCESSORIES

- RECOMMENDED SPARE PARTS KIT
- HOUR METER
- DUST SUPPRESSION KIT
- 24 MONTHS WARRANTY

## AREAS OF APPLICATION

- RECYCLING
- LARGE-SCALE RESIDENTIAL SITES
- MEDIUM-SCALE COMMERCIAL SITES
- DEMOLITION

## SPECIFICATIONS

EQUIPMENT	LOAD CAPACITY	OPENING DIMENSIONS	OUTPUT SETTING	DIMENSIONS
≥ 6 Ton ≥ 7 ≤ 10 Ton	0,45 m <sup>3</sup>	L 1150 H 260 mm	≥ 15 ≤ 60 mm	1435 x 2030 H 835 mm
OIL FLOW	PRESSURE	COUNTER PRESSURE	WEIGHT	MAXIMUM PRODUCTION
120 l/min.	200 bar	20 bar	1,50 Ton	22 m <sup>3</sup> /h